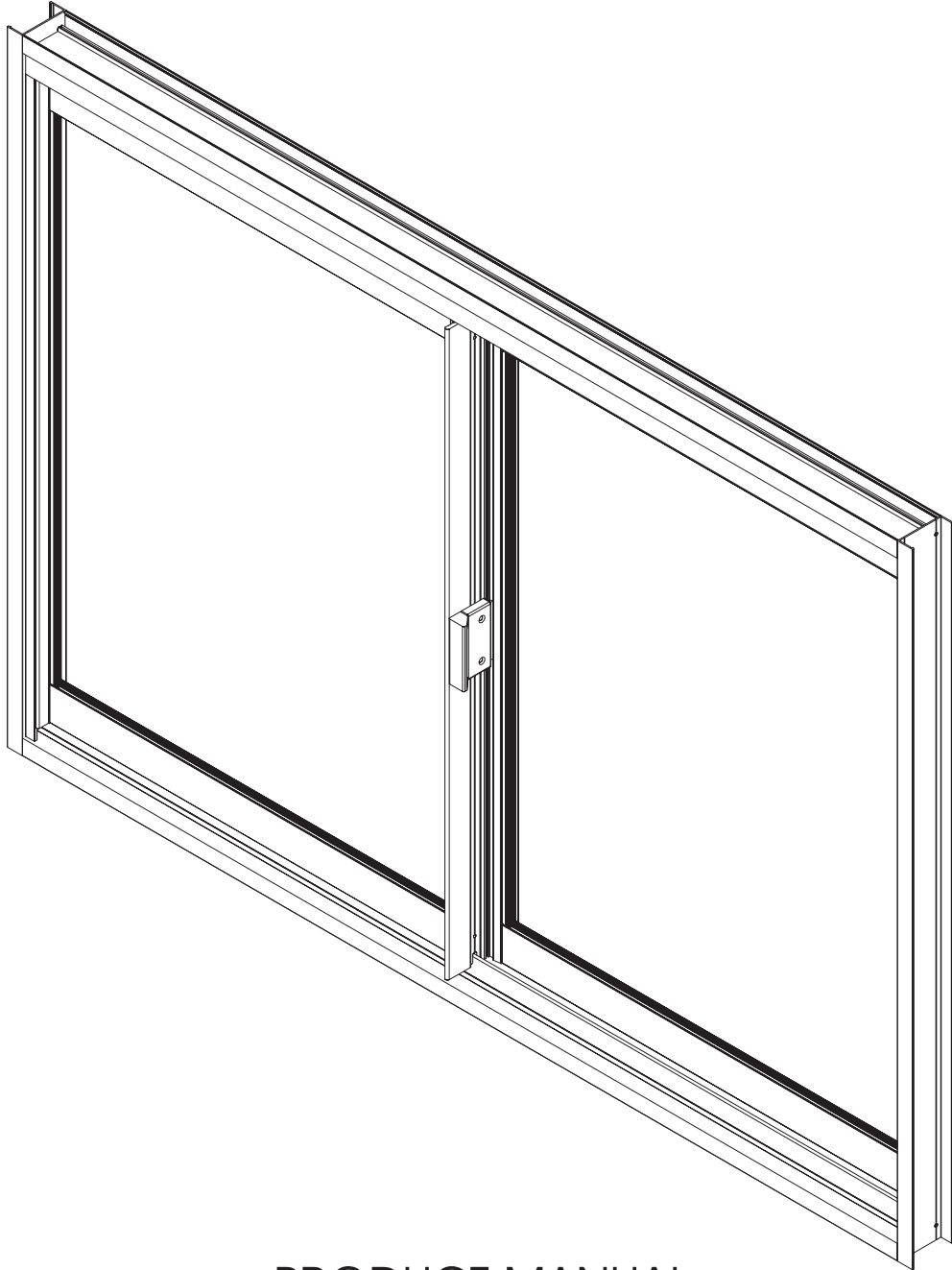




SHEERSLIDE 50 HORIZONTAL SLIDING WINDOW SYSTEM



PRODUCT MANUAL

Disclaimer: The right to make alterations is reserved
© 2010 Sheerline, All Rights Reserved

Revision: 01/10/2010



LEGAL DISCLAIMER

All information, recommendations or advice contained in this documentation is given in good faith to the best of Sheerline's knowledge and is based on current procedures in effect.

Since the actual use of this documentation by the user is beyond the control of Sheerline, such use is within the exclusive responsibility of the user. Sheerline cannot be held responsible for any loss incurred through incorrect or faulty use of this documentation.

Great care has been taken to ensure that the information provided is correct. Sheerline will accept no responsibility for any errors and/or omissions, which may have inadvertently occurred.

All mechanical joints must be sealed with a Sheerline approved joint sealer.

Laminated glass must not stand in water.

All drawings in the Sheerline Documentation are shown NOT to scale.

Sheerline cannot accept responsibility for the use of standard products since Sheerline does not know where these products are being installed.

The use of anti-magnetic stainless steel screws and pop rivets is recommended to reduce galvanic corrosion in harsh environments.

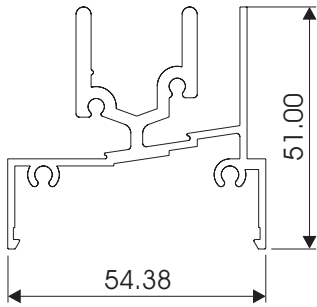
The hardware recommended in this documentation is suitable for use in most atmospheric environments. When hardware is used in severe coastal environments the manufacturer of the hardware must be consulted.

Fixing lugs on frames must be positioned as per the user manual and used in accordance to the AAAMSA specifications. When profiles are screwed together the screw centers must also be according to the user manual.

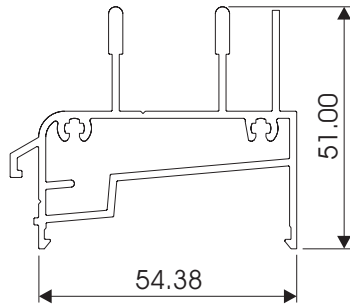
All glass used within Sheerline products must comply with SAGGA regulations.

By continuing to use this documentation you acknowledge that you understand and accept the legal disclaimer.

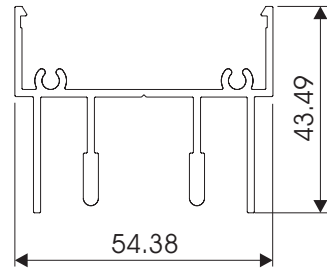
SHEERSLIDE 50 HORIZONTAL SLIDING WINDOW SYSTEM PROFILE IDENTIFICATION



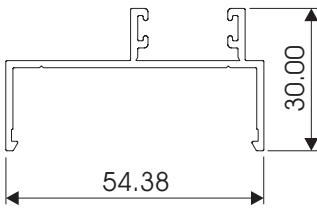
500 SILL RAIL
5002A



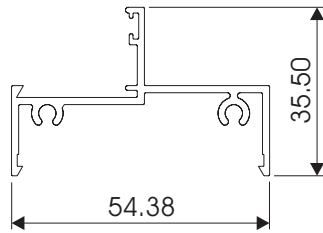
500 HOLLOW SILL RAIL
5016A



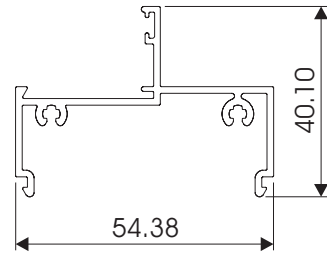
500 HEAD RAIL
5001



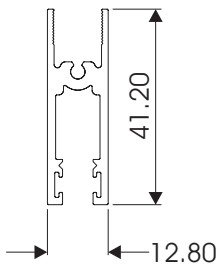
500 JAMB RAIL
5003



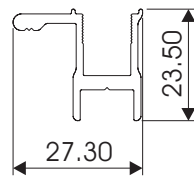
CAS28 54mm
OUTER FRAME
W52007



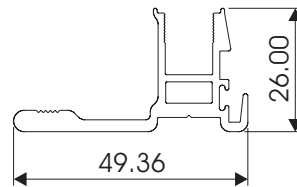
CAS30.5 54mm
OUTER FRAME
W28481



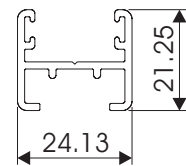
500 SASH
HEAD & SILL
5004A



500 SASH
OUTER FRAME
5005A



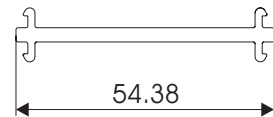
500 SASH
INTERLOCKER
5011A



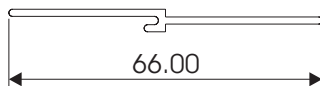
500 OXXO
ADAPTER
5023A



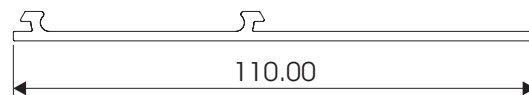
500 SILL
BAFFLE PLATE
5022



500 COUPLING MULLION
ONLY FOR W52007
W24497



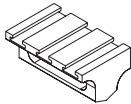
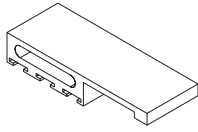
500 SILL EXIT
5009



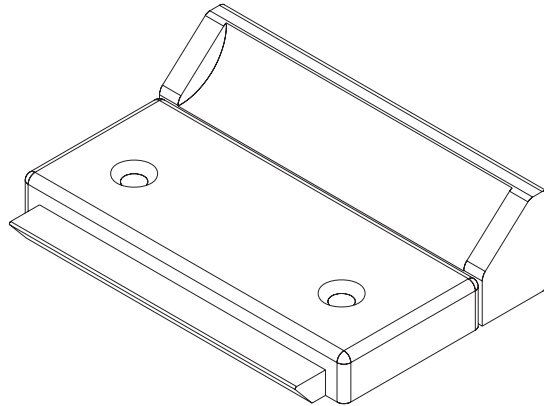
500 FIXING LUG
5025

Disclaimer: The right to make alterations is reserved
© 2010 Sheerline, All Rights Reserved

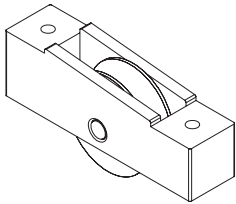
SHEERSLIDE 50 HORIZONTAL SLIDING WINDOW SYSTEM HARDWARE IDENTIFICATION



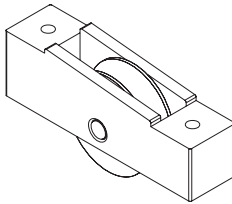
DRAUGHT EXCLUDER
TOP AND BOTTOM
HW5001



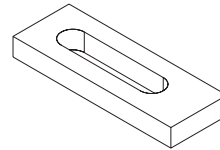
NYLON SLIDER HANDLE 60mm
HW5007



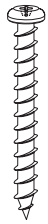
ROLLER STAINLESS STEEL
WITH BEARING ASSEMBLY
ROLL500BA



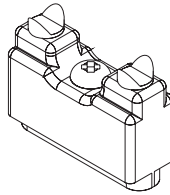
ROLLER NYLON WITH
STAINLESS STEEL PIN
HW5008



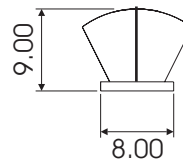
ANTI LIFT BLOCK
HW5003



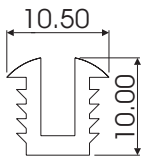
8x30 P/HEAD POSI
S/S SCREW
SC0830P



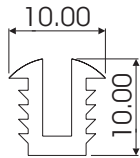
SKID BLOCK (FIXED SASH)
IMNSKBLB



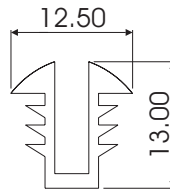
FINPILE
FP48500FG



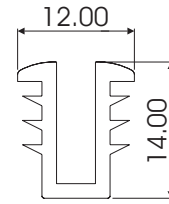
CHANNEL H160
VGC65FG



CHANNEL H12
VGC4FG

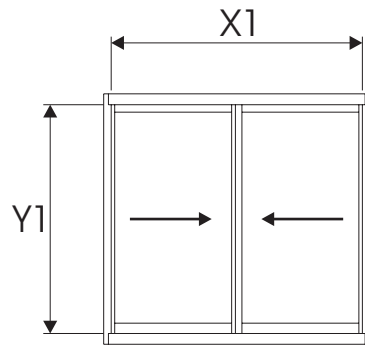


CHANNEL H21
JC15004FG



CHANNEL H33
JC15005FG

SHEERSLIDE 50 HORIZONTAL
SLIDING WINDOW
SIZE LIMITATION GUIDE



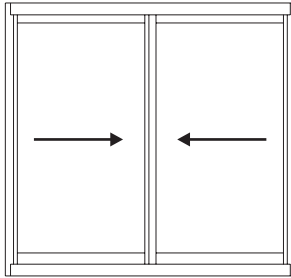
MAXIMUM SASH WIDTH = 750mm

MAXIMUM SASH HEIGHT = 1500mm

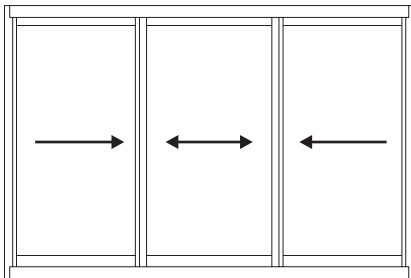
SHEERSLIDE 50 HORIZONTAL SLIDING WINDOW SYSTEM TYPICAL CONFIGURATIONS



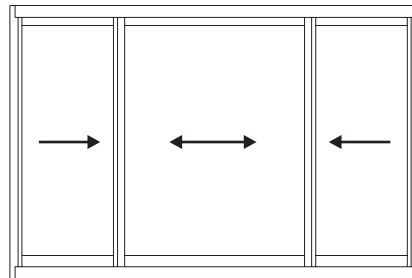
OX CONFIGURATION



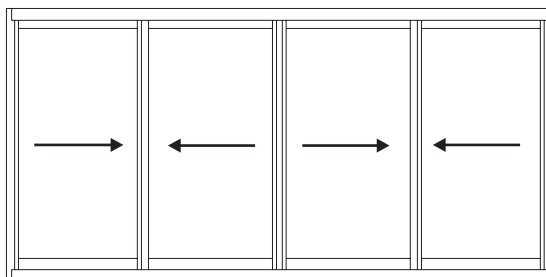
XOX EQUAL PANE
CONFIGURATION



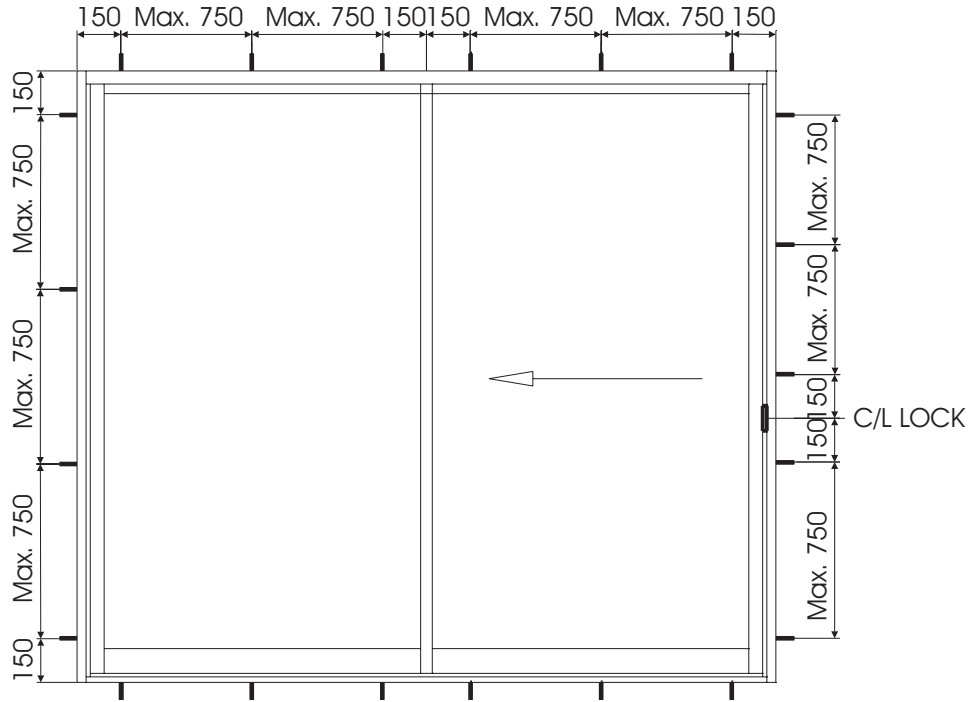
XOX UNEQUAL PANE
CONFIGURATION



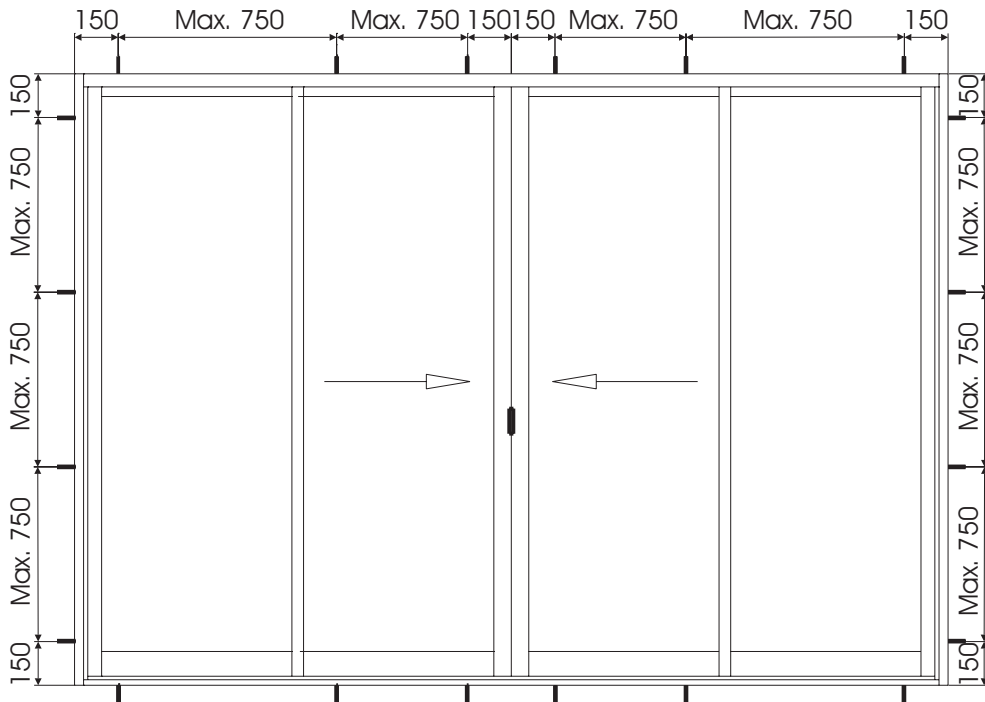
OXXO CONFIGURATION



SHEERSLIDE 50 HORIZONTAL SLIDING WINDOW SYSTEM FIXING DETAILS



TYPICAL OX SLIDING DOOR &
HORIZONTAL SLIDING WINDOW



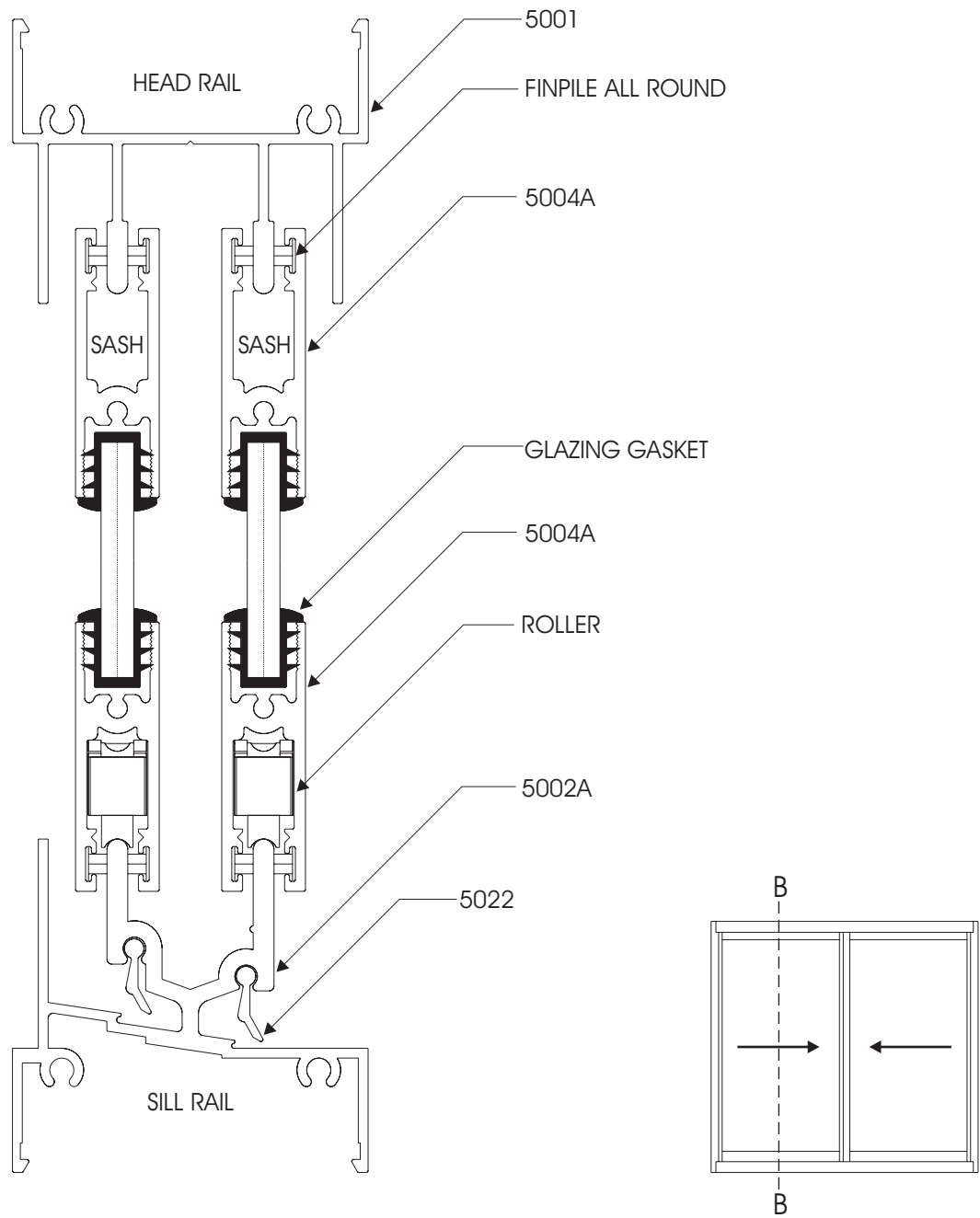
TYPICAL OXXO SLIDING DOOR &
HORIZONTAL SLIDING WINDOW

Disclaimer: The right to make alterations is reserved
© 2010 Sheerline, All Rights Reserved

SHEERSLIDE 50 HORIZONTAL SLIDING WINDOW SYSTEM VERTICAL CROSS SECTIONAL DETAIL SHOWING SILL RAIL



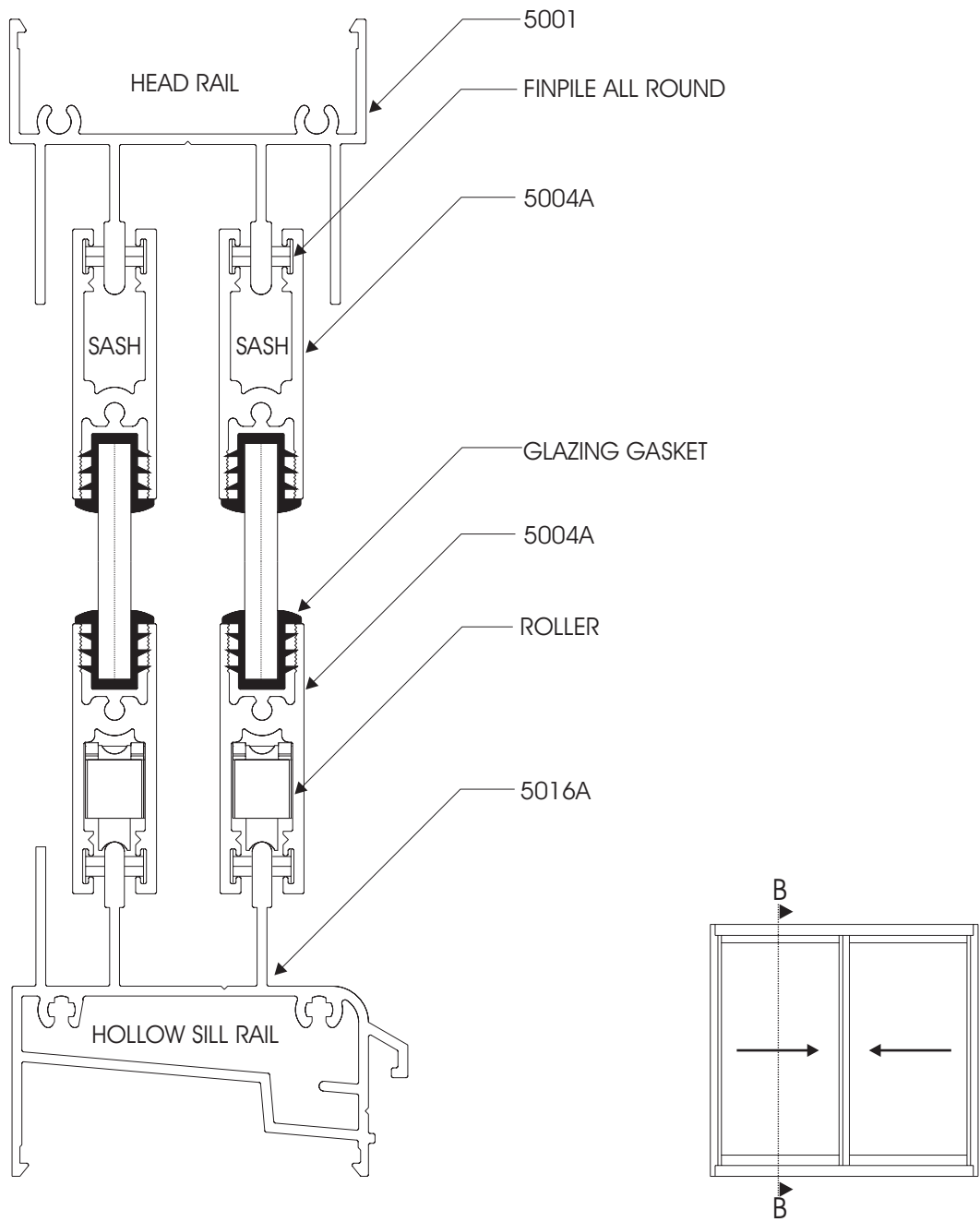
SECTIONAL DETAIL THROUGH B---B
SHOWING BOTH SASHES



SHEERSLIDE 50 HORIZONTAL
 SLIDING WINDOW SYSTEM
 VERTICAL CROSS SECTIONAL DETAIL
 SHOWING HOLLOW SILL RAIL



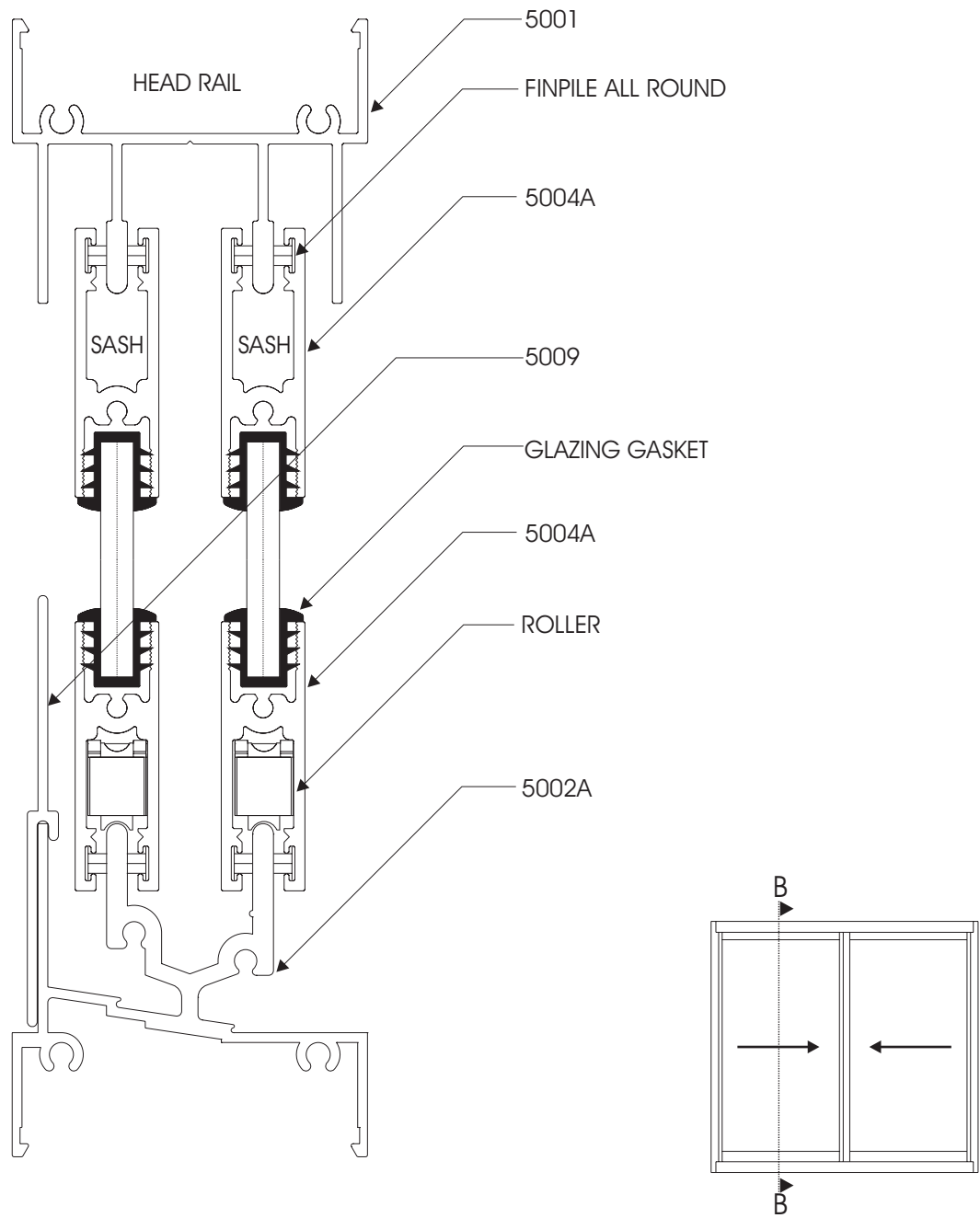
SECTION B - B



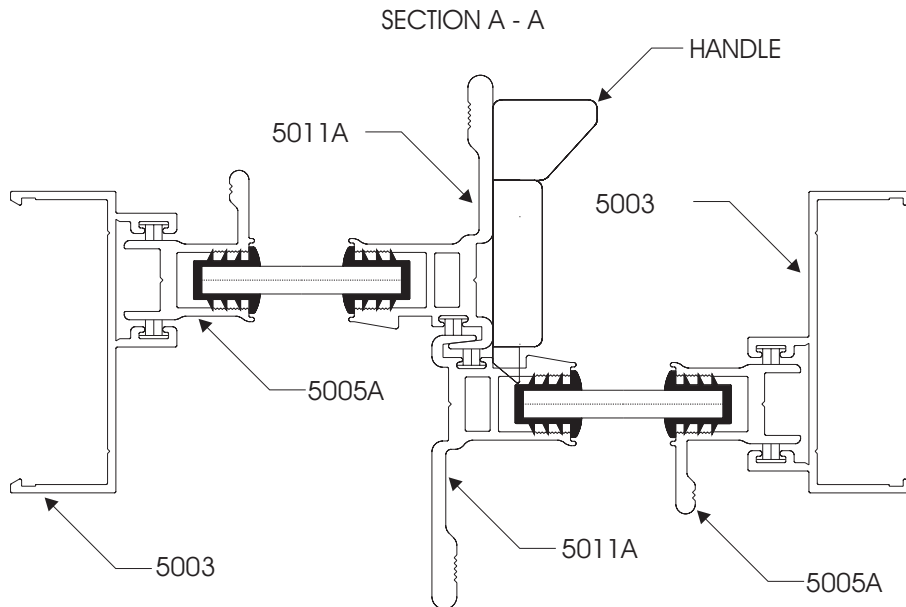
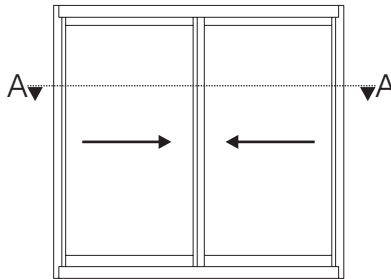
SHEERSLIDE 50 HORIZONTAL
 SLIDING WINDOW SYSTEM
 VERTICAL CROSS SECTIONAL DETAIL
 SHOWING HIGH RISE SILL RAIL



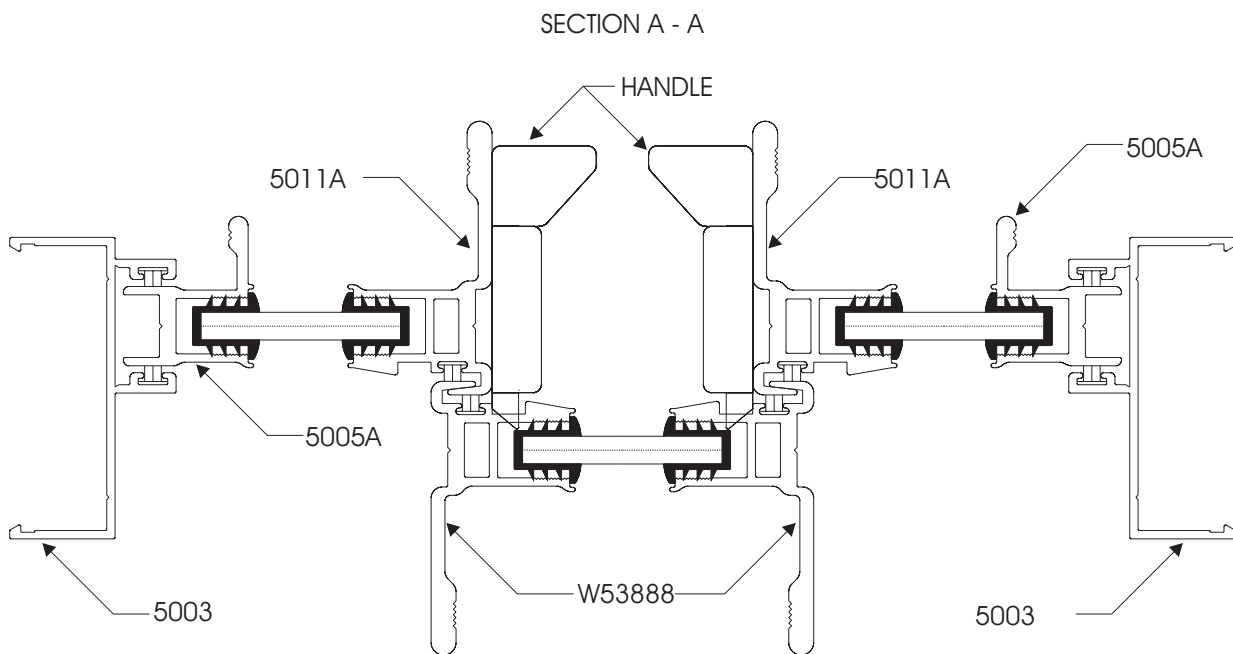
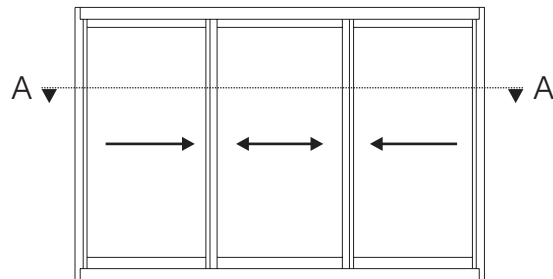
SECTION B - B



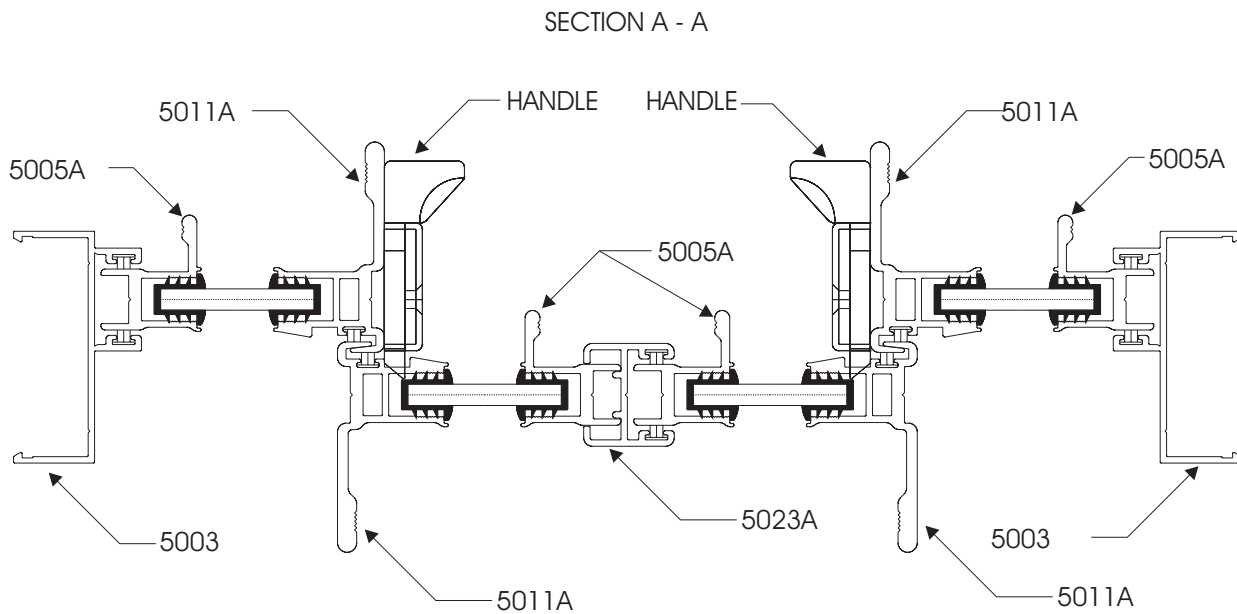
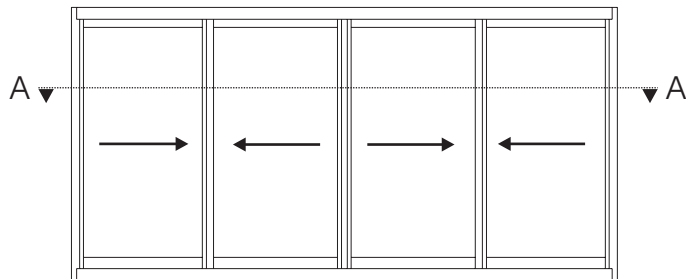
SHEERSLIDE 50 HORIZONTAL
SLIDING WINDOW SYSTEM
HORIZONTAL CROSS SECTIONAL DETAIL
SHOWING OX CONFIGURATION



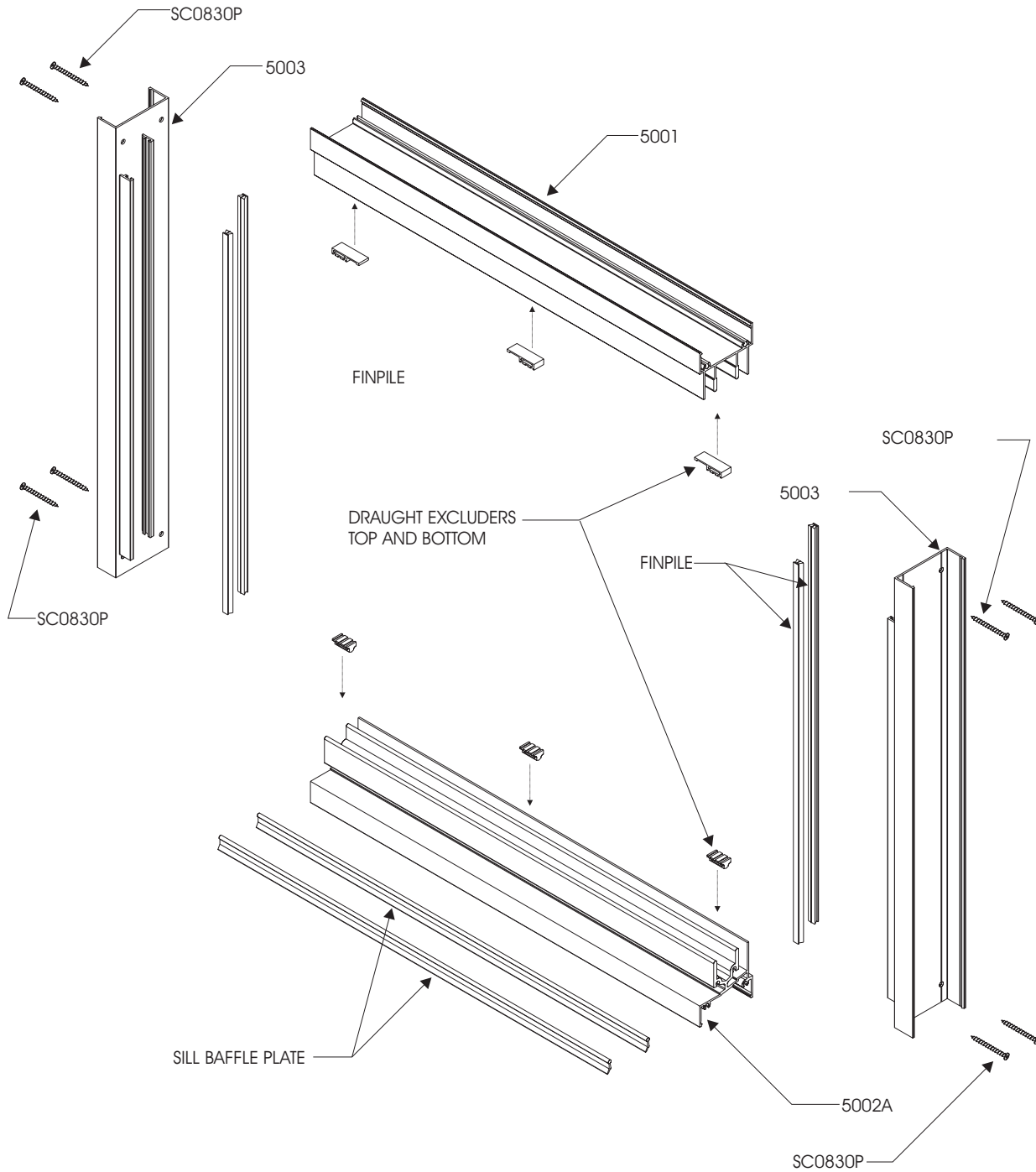
SHEERSLIDE 50 HORIZONTAL
SLIDING WINDOW SYSTEM
HORIZONTAL CROSS SECTIONAL DETAIL
SHOWING XOX CONFIGURATION



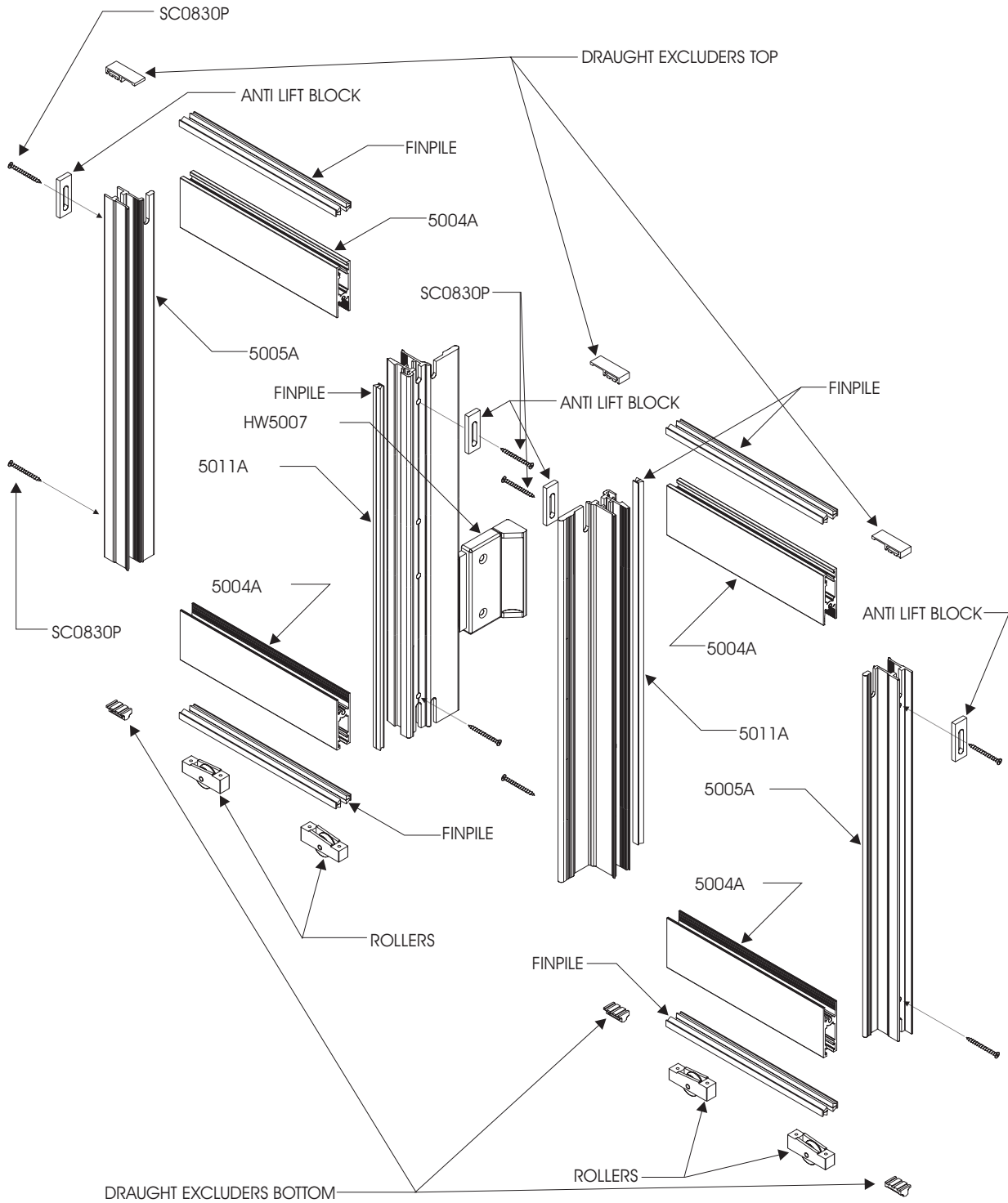
SHEERSLIDE 50 HORIZONTAL
SLIDING WINDOW SYSTEM
HORIZONTAL CROSS SECTIONAL DETAIL
SHOWING OXXO CONFIGURATION



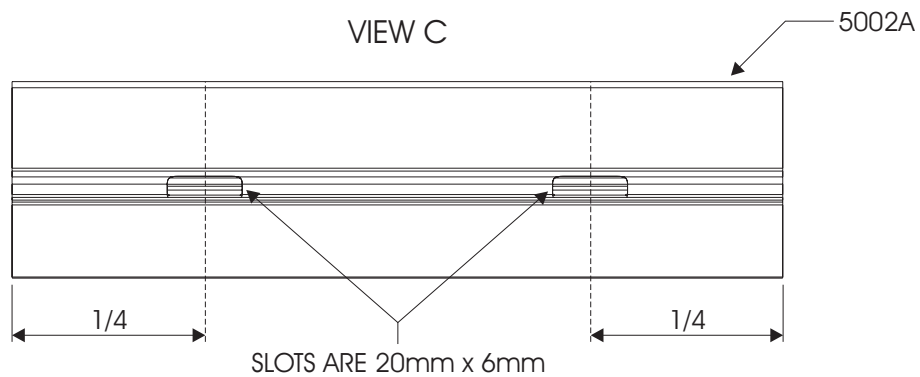
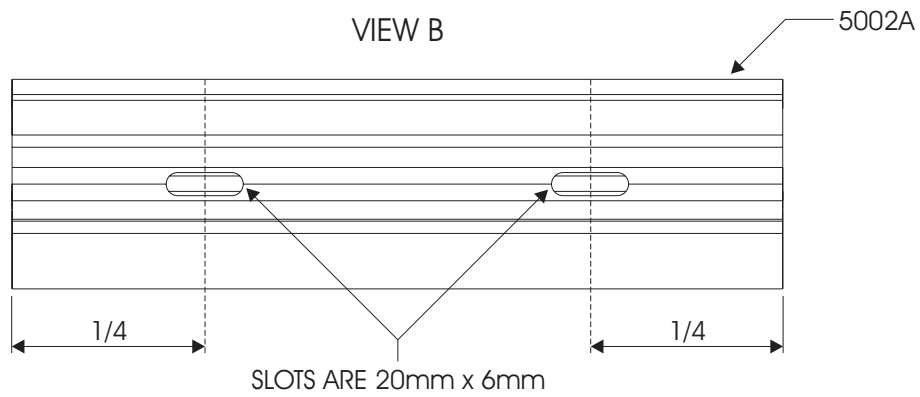
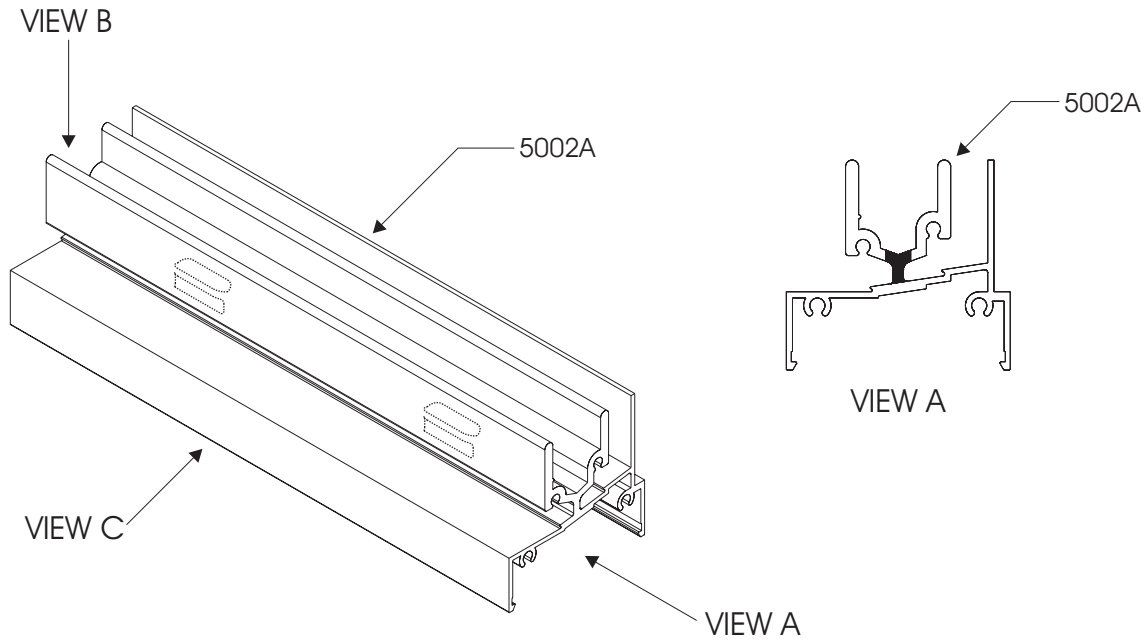
SHEERSLIDE 50 HORIZONTAL SLIDING WINDOW SYSTEM OUTER FRAME COMPONENT ASSEMBLY DETAIL



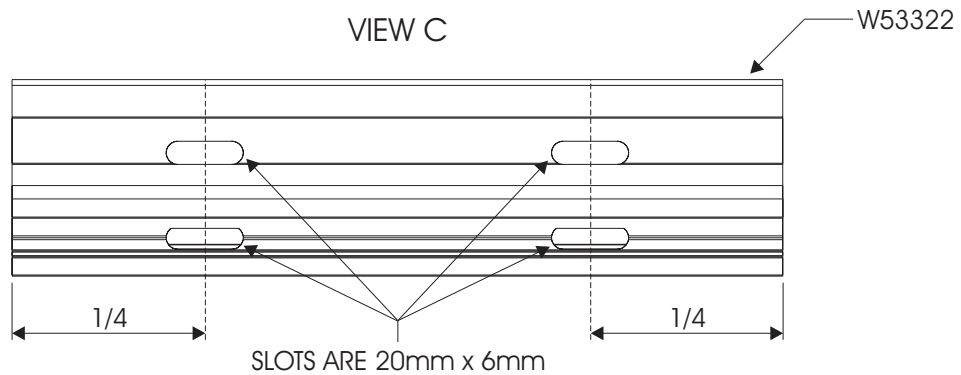
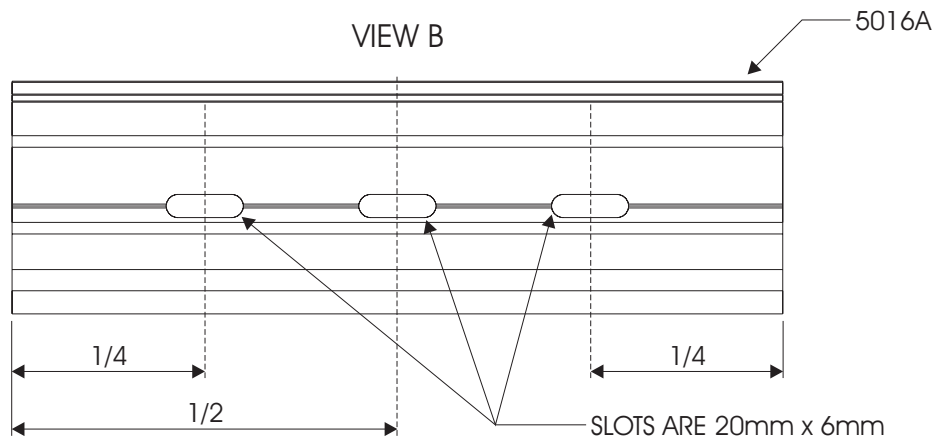
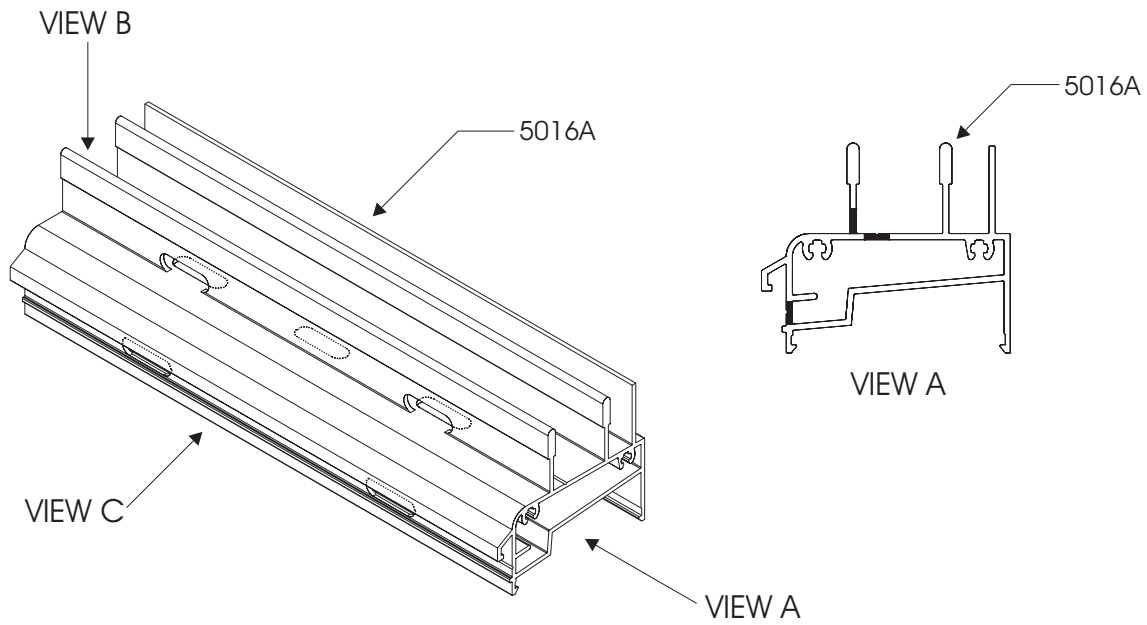
SHEERSLIDE 50 HORIZONTAL SLIDING WINDOW SYSTEM SASH FRAME COMPONENT ASSEMBLY DETAIL



SHEERSLIDE 50 HORIZONTAL SLIDING WINDOW SYSTEM SILL MACHINING DETAIL

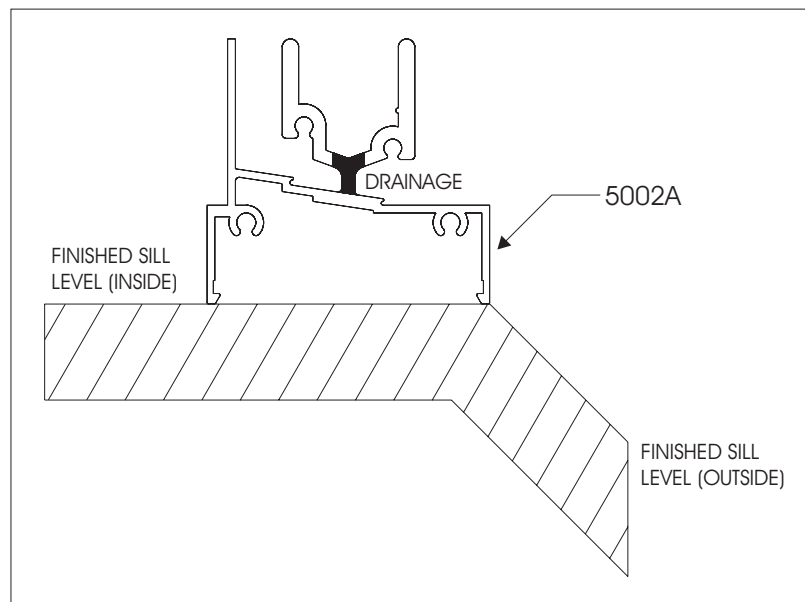
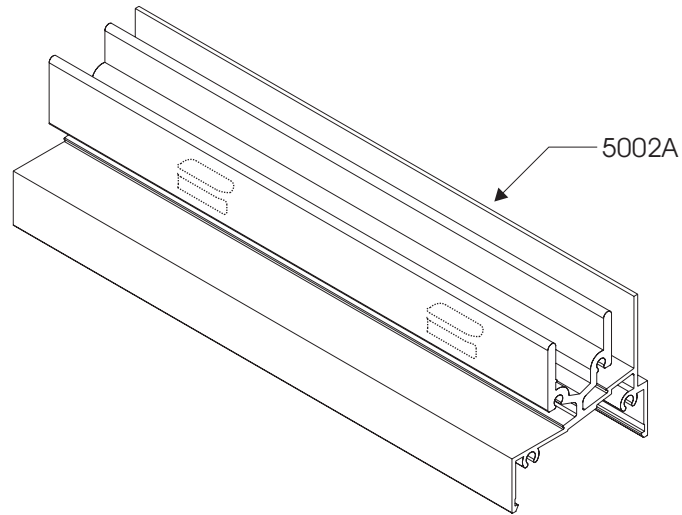


SHEERSLIDE 50 HORIZONTAL SLIDING WINDOW SYSTEM HOLLOW SILL MACHINING DETAIL



SHEERSLIDE 50 HORIZONTAL
SLIDING WINDOW SYSTEM
SILL FLOOR LEVEL DETAIL

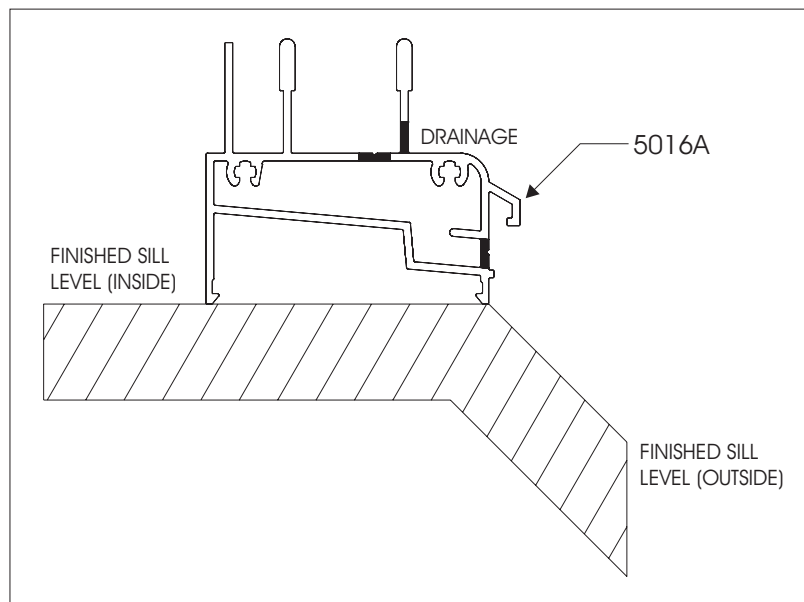
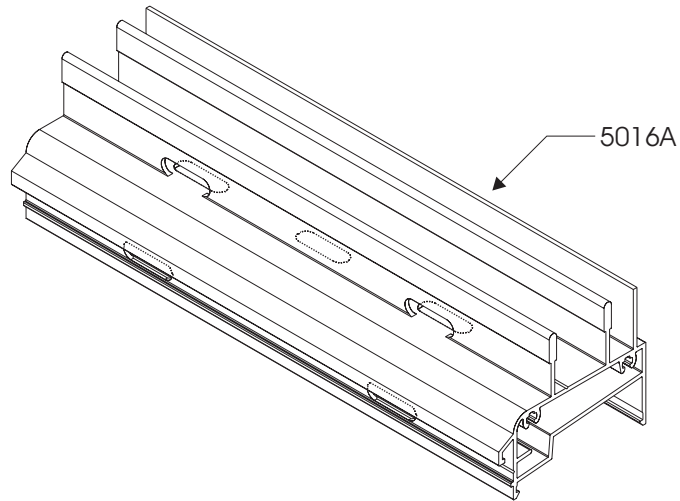
SEE MACHINING DETAILS FOR SILL DRAINAGE
ON PAGE 11 FOR MORE INFORMATION



SHEERSLIDE 50 HORIZONTAL
SLIDING WINDOW SYSTEM
HOLLOW SILL FLOOR LEVEL DETAIL

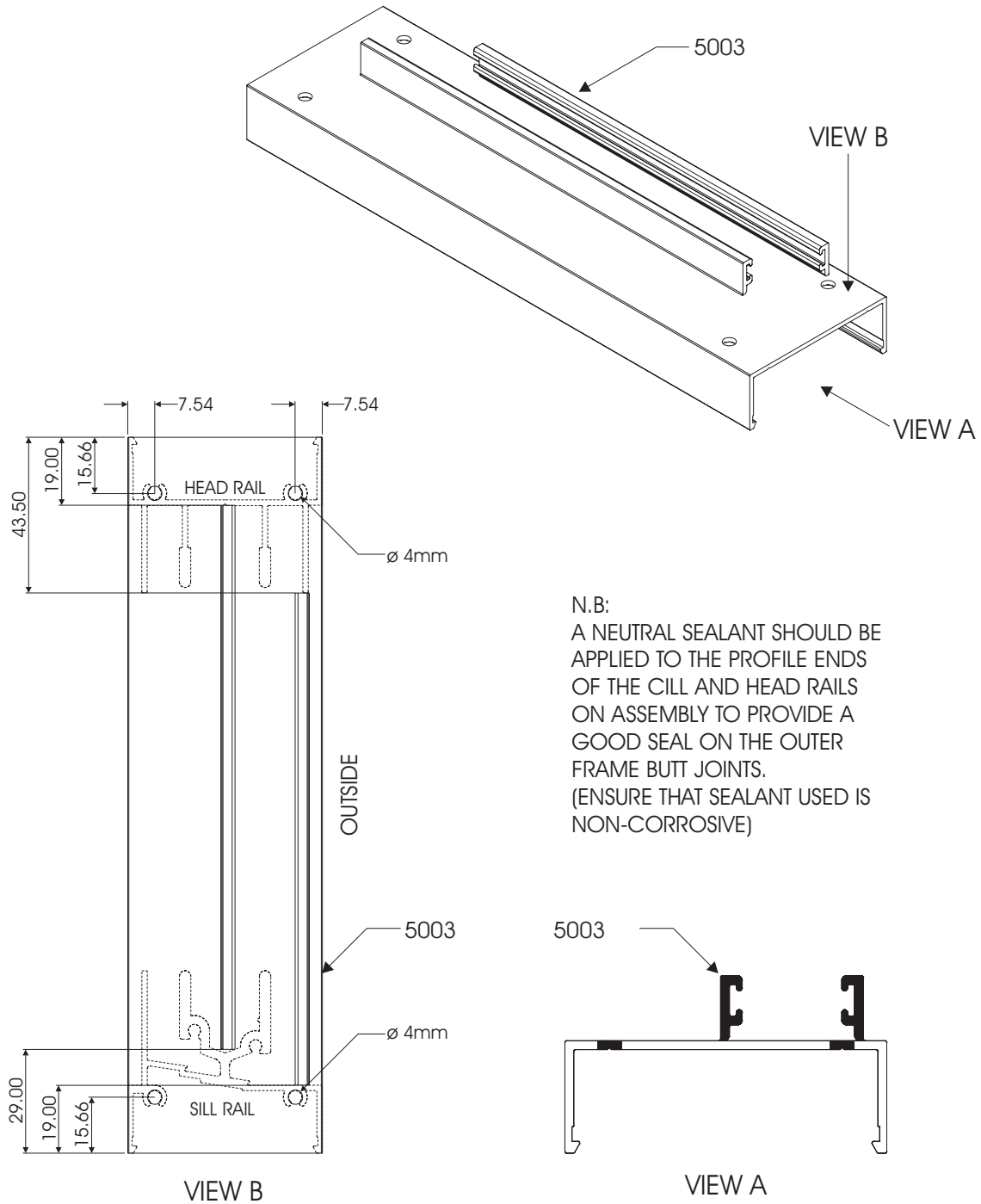


SEE MACHINING DETAILS FOR SILL DRAINAGE
ON PAGE 12 FOR MORE INFORMATION



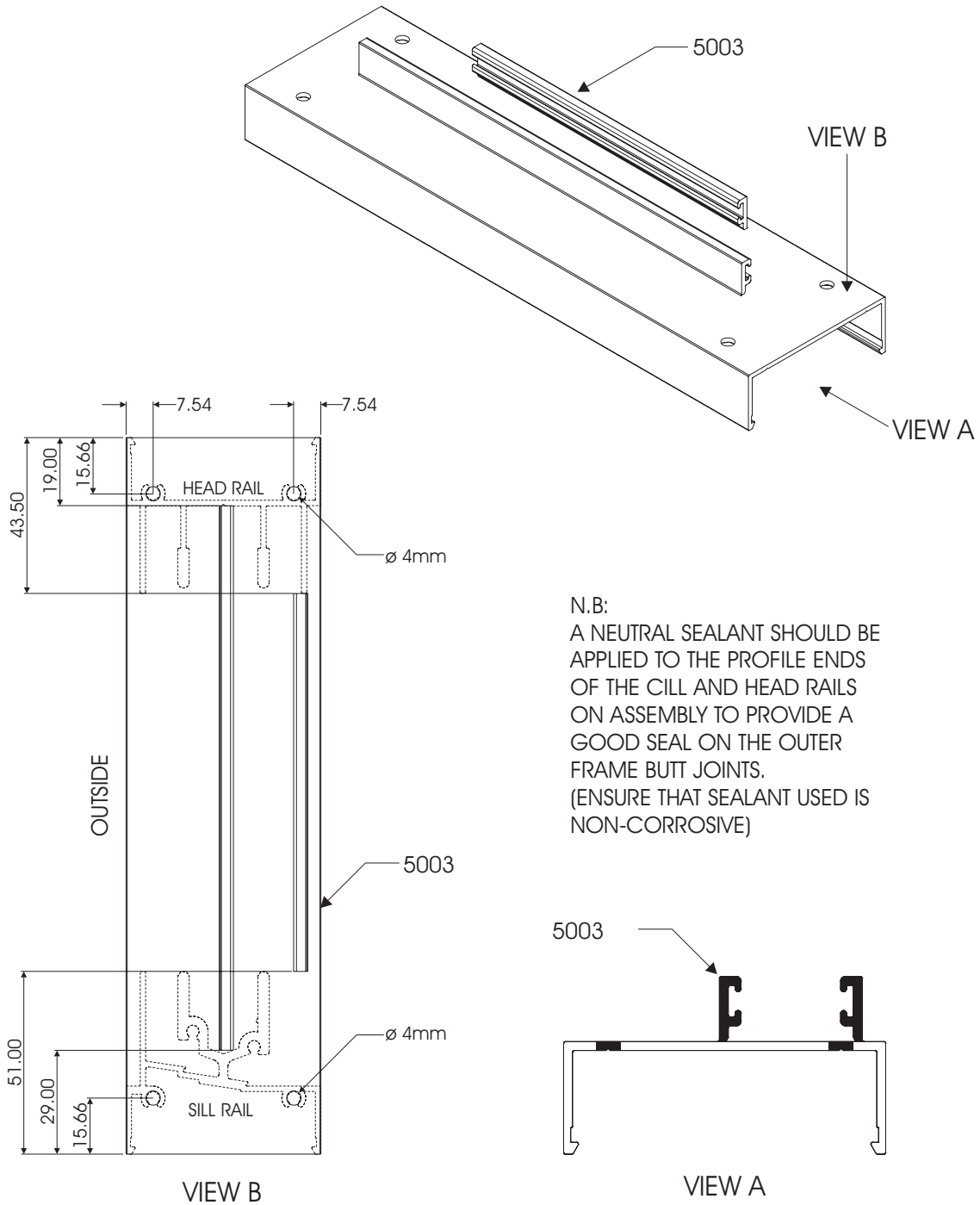
SHEERSLIDE 50 HORIZONTAL SLIDING WINDOW SYSTEM JAMB RAIL MACHINING DETAIL

LEFT SIDE JAMB RAIL FOR OX CONFIGURATION
LEFT & RIGHT SIDE JAMB RAIL FOR OXXO CONFIGURATION

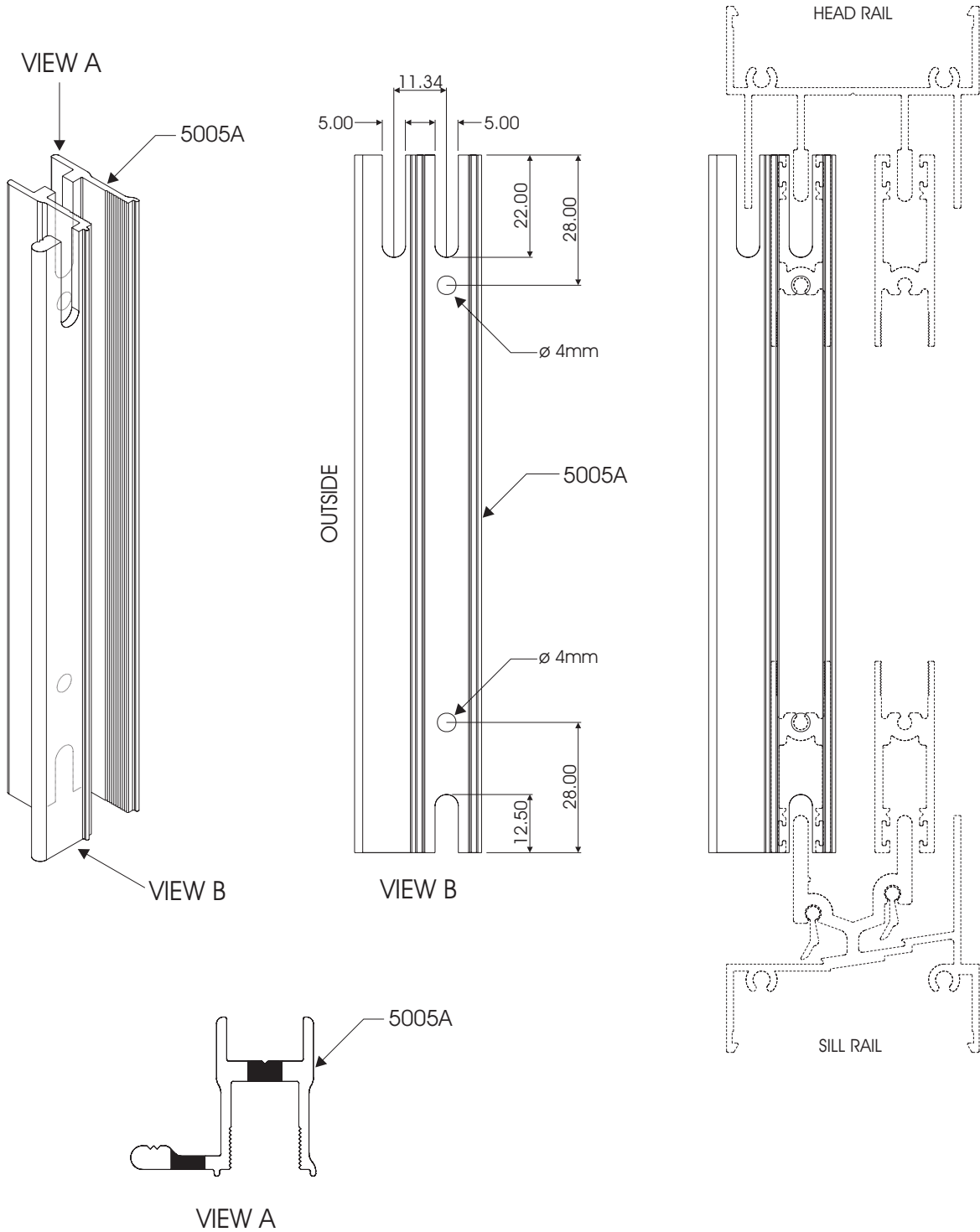


N.B:
A NEUTRAL SEALANT SHOULD BE
APPLIED TO THE PROFILE ENDS
OF THE CILL AND HEAD RAILS
ON ASSEMBLY TO PROVIDE A
GOOD SEAL ON THE OUTER
FRAME BUTT JOINTS.
(ENSURE THAT SEALANT USED IS
NON-CORROSIVE)

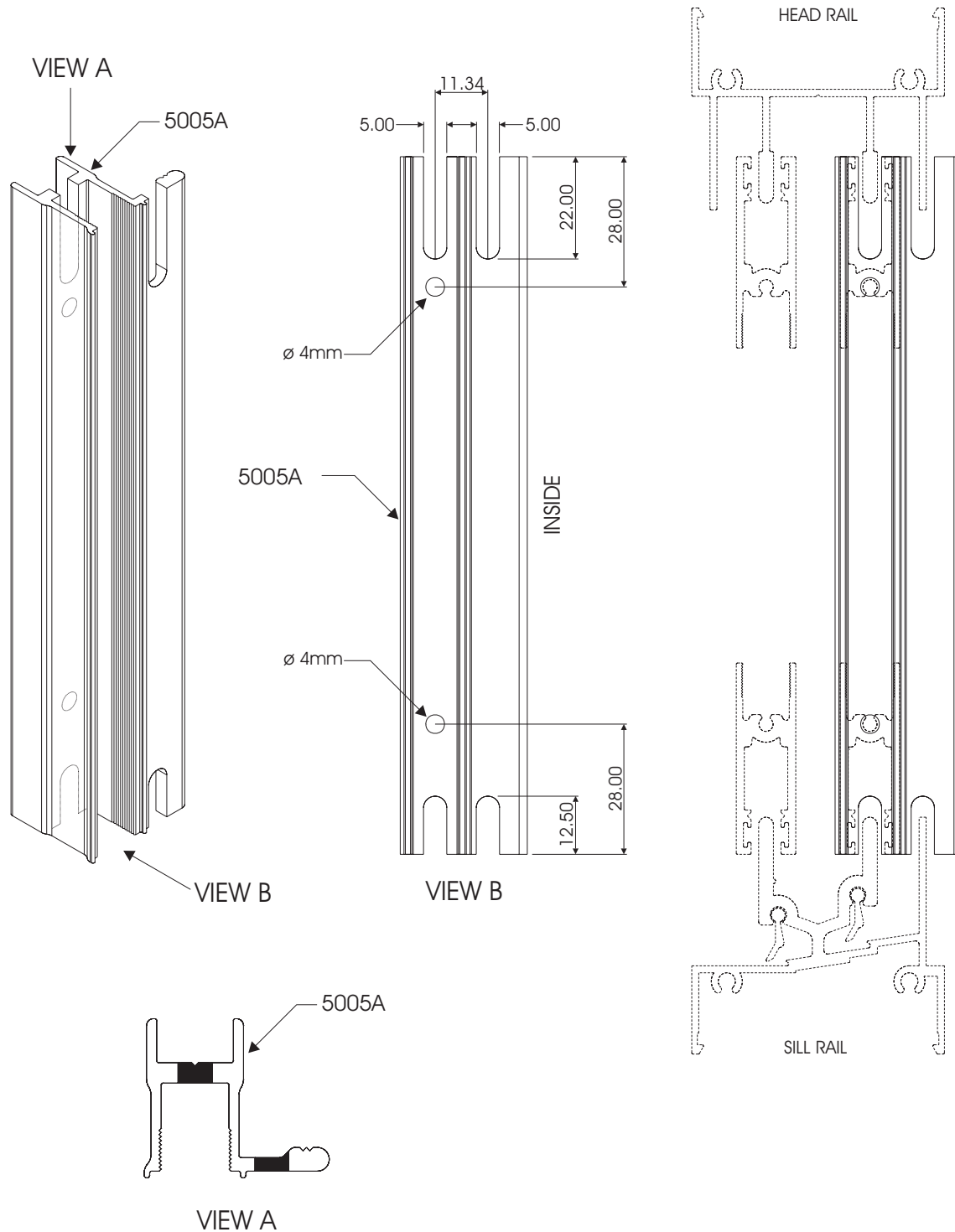
SHEERSLIDE 50 HORIZONTAL
 SLIDING WINDOW SYSTEM
 JAMB RAIL MACHINING DETAIL
 RIGHT SIDE JAMB RAIL FOR OX CONFIGURATION



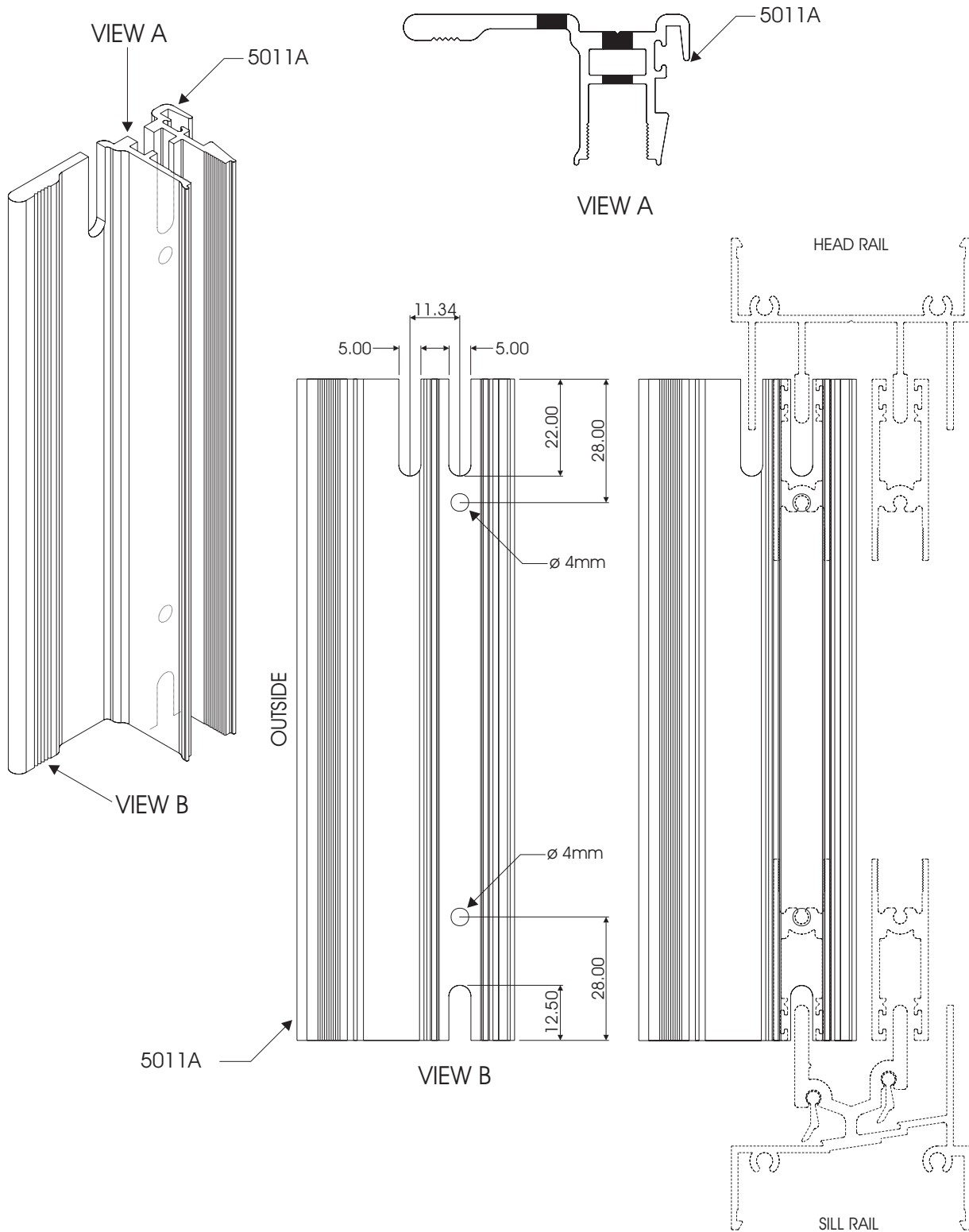
SHEERSLIDE 50 HORIZONTAL
SLIDING WINDOW SYSTEM
SASH OUTER JAMB
MACHINING DETAIL



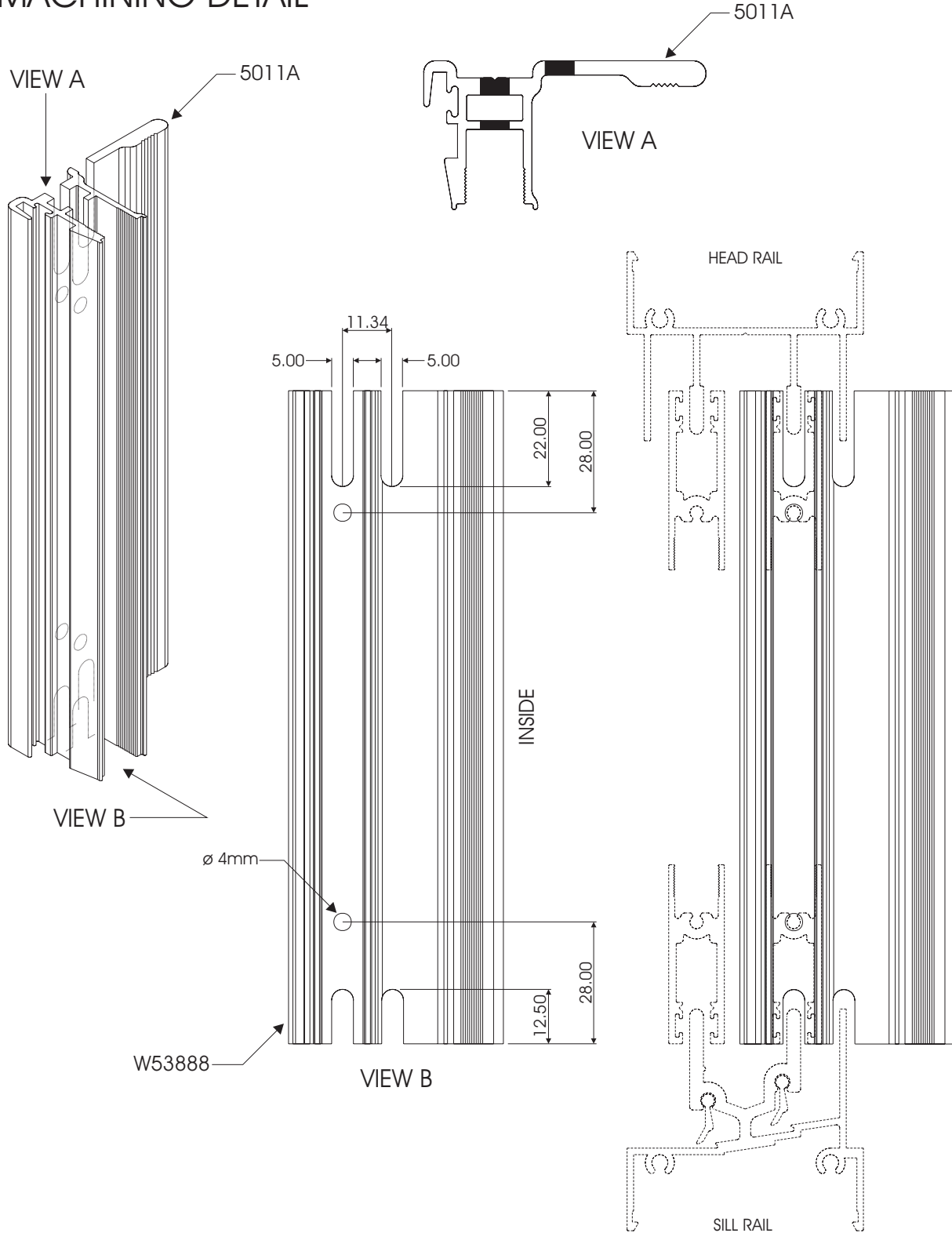
SHEERSLIDE 50 HORIZONTAL SLIDING WINDOW SYSTEM INNER SASH OUTER JAMB MACHINING DETAIL



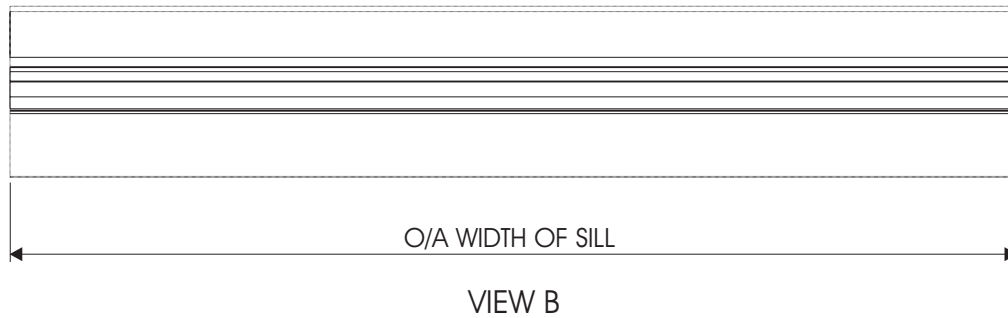
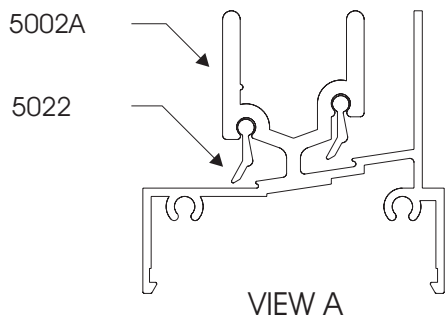
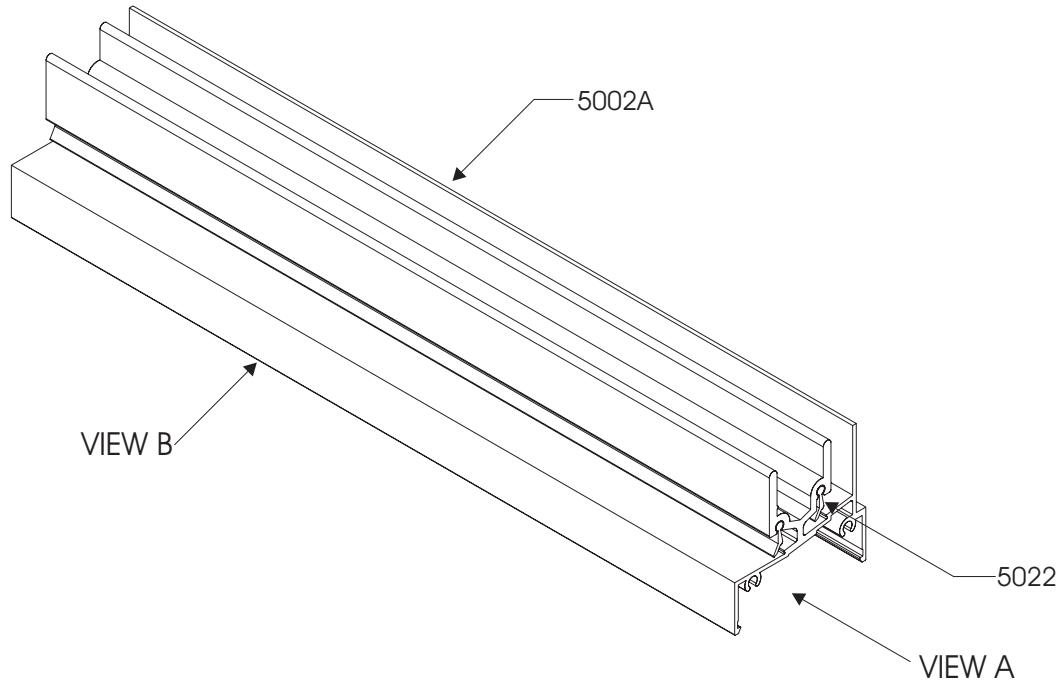
SHEERSLIDE 50 HORIZONTAL
SLIDING WINDOW SYSTEM
SASH INTERLOCKER
MACHINING DETAIL



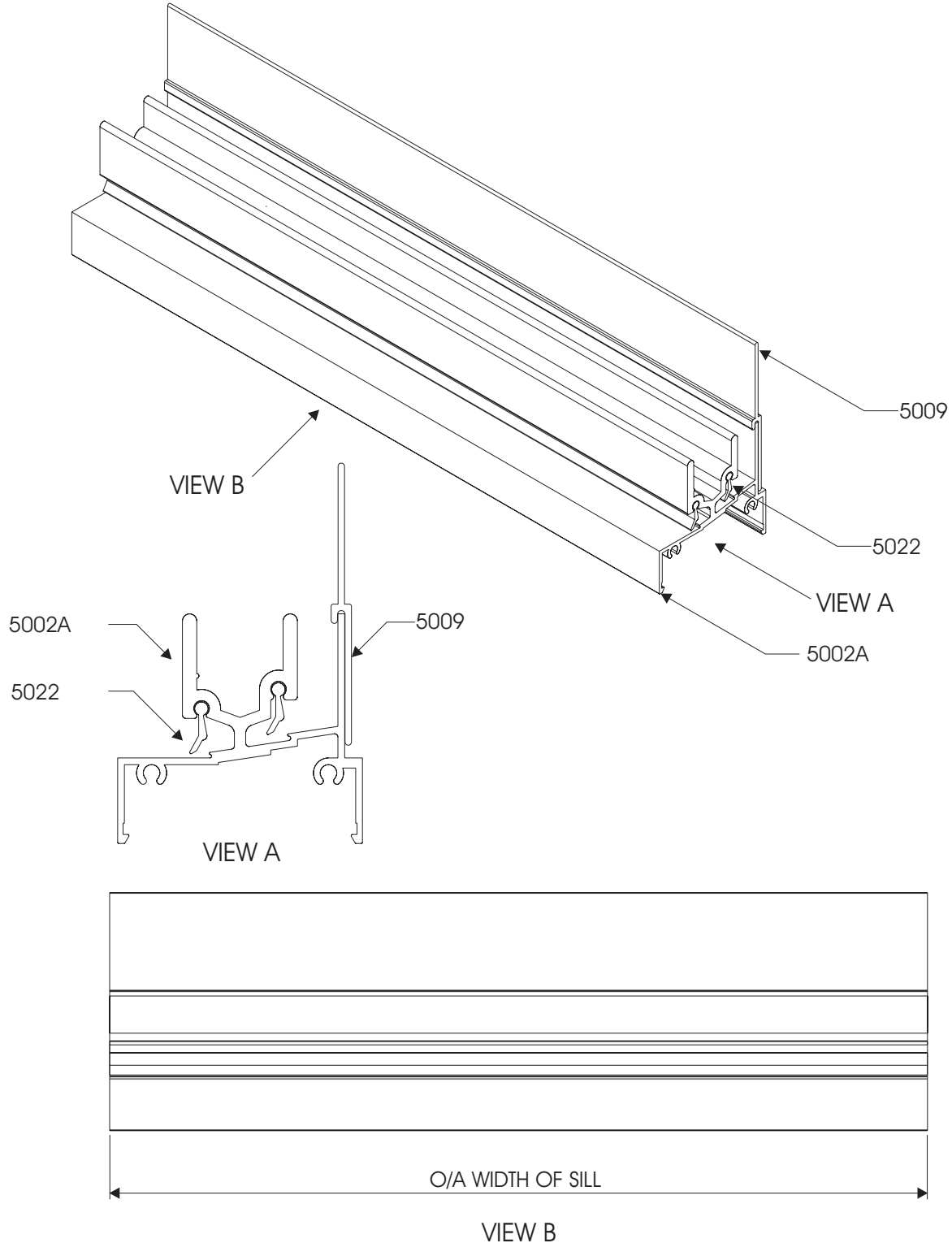
SHEERSLIDE 50 HORIZONTAL SLIDING WINDOW SYSTEM INNER SASH INTERLOCKER MACHINING DETAIL



SHEERSLIDE 50 HORIZONTAL
SLIDING WINDOW SYSTEM
SILL BAFFLE PLATE
MACHINING DETAIL



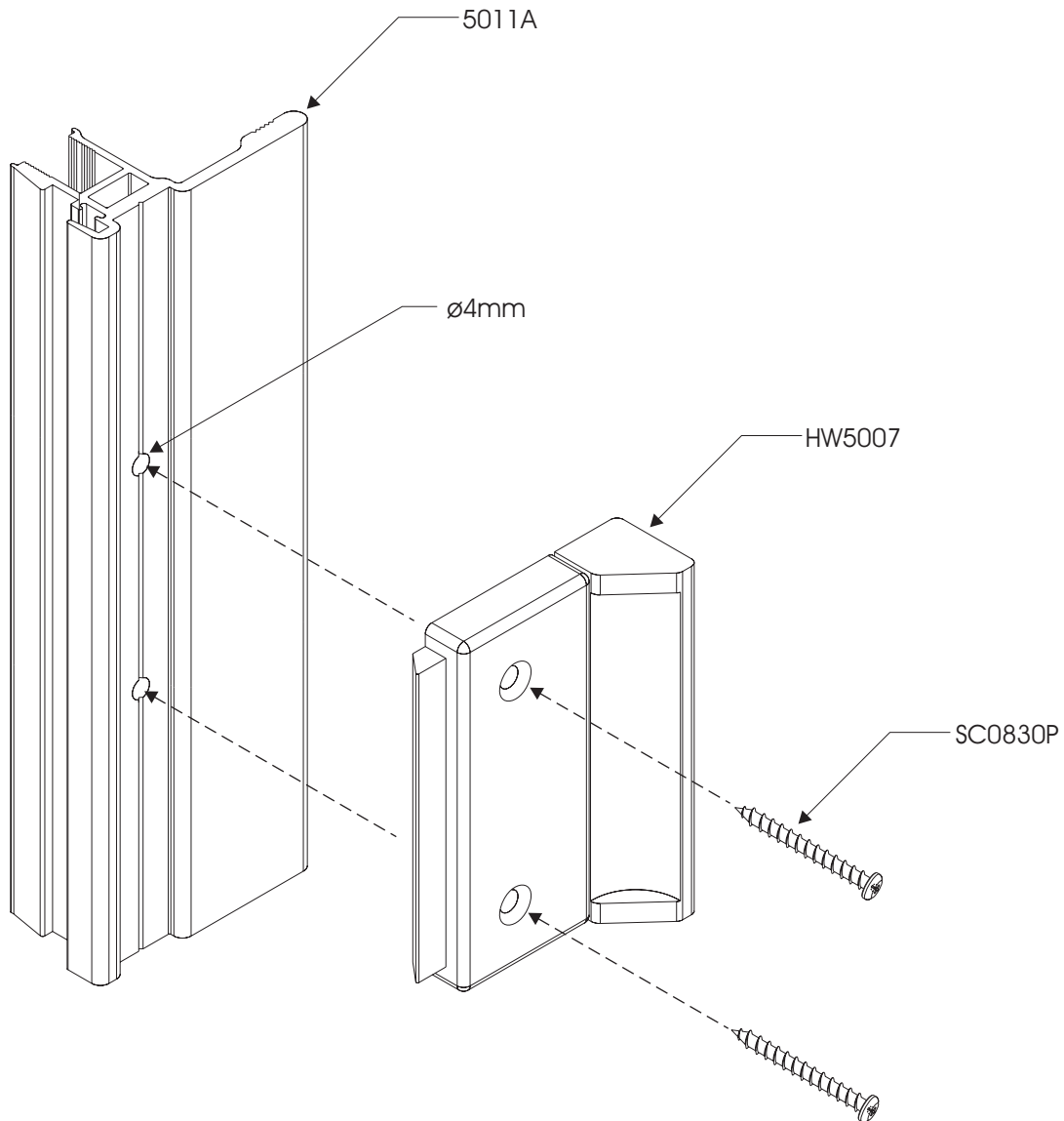
SHEERSLIDE 50 HORIZONTAL
 SLIDING WINDOW SYSTEM
 HIGH RISE ADAPTOR
 MACHINING DETAIL
 USED TO GET AAAMSA TEST A3



SHEERSLIDE 50 HORIZONTAL SLIDING WINDOW SYSTEM HANDLE ASSEMBLY DETAIL



NOTE:
HANDLE SET TO BE FITTED TO CENTRE OF
INNER SASH INTERLOCKER SECTION



SHEERSLIDE 50 HORIZONTAL SLIDING WINDOW SYSTEM ANTI LIFT BLOCK ASSEMBLY DETAIL

NOTE:
ANTI LIFT BLOCKS TO BE FITTED TO
TOP OF SASH OUTER JAMB

NOTE:
ANTI LIFT BLOCKS TO BE FITTED TO
TOP OF SASH INTERLOCKER

