



TEST RESULTS

THERMAL TEST RESULTS - SANS 204	
DESCRIPTION	RESULTS
U-VALUE	5.66 W/m²/K
SHGC	0.37
DESIGN WIND LOAD	2000 PA
6.38 mm Laminated Safety Glass	

MECHANICAL PERFORMANCE TEST RESULTS - SANS 613	
DESCRIPTION	RESULTS
NEGATIVE PRESSURE	Passed 2000 PA 2000 PA
POSITIVE PRESSURE	Passed 2000 PA 2000 PA
WATER PENETRATION	Passed 400 PA
STRUCTURAL	Passed 3000 PA

Test results are based on a specific window size and configuration and results will differ for different window sizes and configurations. Refer to U-Solve for actual design results.

APPLICATIONS

CREALCO				
casement windows	HOME	MANSION	MALL	TOWER
Casement 28 window	✓			
Casement 30.5 window	✓			
Casement 34 window		✓	✓	
Casement 36 window		✓	✓	✓
Casement 38 window		✓	✓	✓
Casement 44 window			✓	
Edge thermal break casement window		✓	✓	✓
Serene casement widnow		✓	✓	✓

Crealco product range is available from the following Wispeco Appointed Stockists:



This brochure must be read in conjunction with the Installation, Cleaning & Maintenance Guidelines and Performance Certificates for the relevant system. The Manuals must also be used in conjunction with the design and cutting lists from the latest version of Starfront.



CASEMENT 30.5 WINDOW (30.5MM)

The Crealco Casement 30.5 (30.5 mm outer frame) is a projected top and side hung window system for the residential market. The Casement 30.5 window offers a diversity of window configurations to best suit your specific building requirements. The Casement 30.5 is limited to the following vent sizes: Maximum top hung vent dimensions of 1000 mm x 750 mm and maximum side hung vent dimensions of 600 mm x 1200 mm.

FEATURES

- Designed to accommodate burglar bars if required
- The window is draft-free and watertight due to the use of effective seals
- Vents (opening panes) hinges on friction stays that allow the window to remain open at various angles without using a peg stay
- Can be built in a face brick wall or a plastered opening
- Insect screens can be added at the time of manufacturing or at a later stage

GLAZING

- The casement window is suitable for single glass panes (single glazing)
- It allows for various thickness of glass ranging between 4 mm clear float glass to 6.38 mm laminated safety glass

GASKET & SEALS

- High quality, locally available gaskets and seals are available
- Affordable and reliable

FINISH

- Available in a variety of popular architectural powder coating colours and finishes

HARDWARE

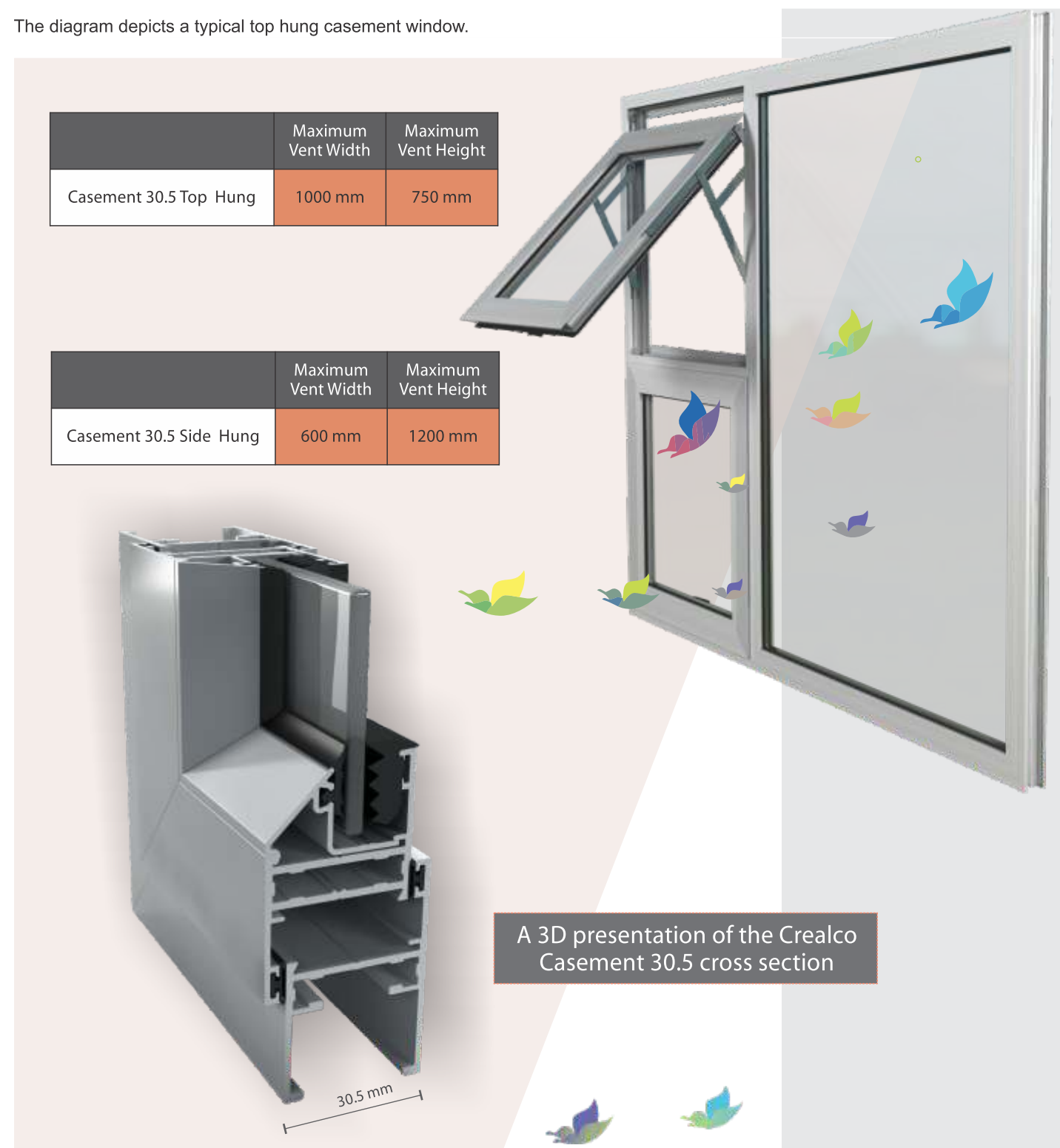
- Designed to accommodate standard local hardware

TECHNICAL SPECIFICATIONS

The diagram depicts a typical top hung casement window.

	Maximum Vent Width	Maximum Vent Height
Casement 30.5 Top Hung	1000 mm	750 mm

	Maximum Vent Width	Maximum Vent Height
Casement 30.5 Side Hung	600 mm	1200 mm



This brochure must be read in conjunction with the Installation, Cleaning & Maintenance Guidelines and Performance Certificates for the relevant system. The Manuals must also be used in conjunction with the design and cutting lists from the latest version of Starfront.

This brochure must be read in conjunction with the Installation, Cleaning & Maintenance Guidelines and Performance Certificates for the relevant system. The Manuals must also be used in conjunction with the design and cutting lists from the latest version of Starfront.